



Arch. Yousef Mohammad Saedi office
For Engineering Consultancy

إشراف على التنفيذ - رفع مساحي
تصميم معماري - تخطيط



مكتب المهندس الاستشاري
يوسف محمد سعيد
للإستشارات الهندسية



Arch. Yousef Mohammad Saedi office
For Engineering Consultancy

Design - Supervision -
Planning - Consulting eng.





The office established since 1411AH for business conducting in Engineering Consultants field of various kinds (Design - planning – supervision) in addition to work in the field of implementation of distinctive projects.

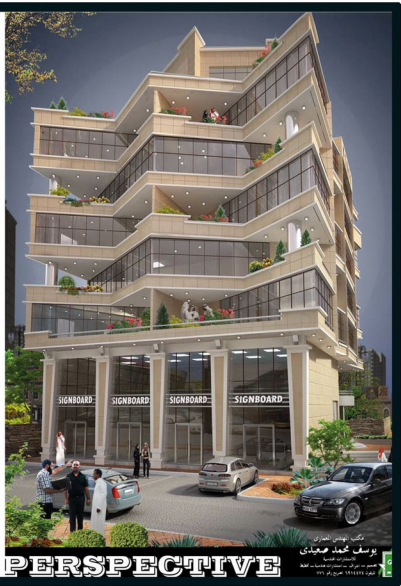
The office has the presence of distinguished group of architects, structural engineers electricians, also technicians and some of other engineering disciplines whom Have great experience in this field.





Architect Yousef Mohammed Saeedi ... Outline of His Office

He began his career after graduating from the Department of architecture and joined to work as an employee in several different sectors. Until he Foundations the Office of the engineering consultancy in individual facility for (Engineering consultancy, Maps design, Technical supervision on the implementation, Surveyors lifting) that is for his intense passion for the profession and loving to totally devote himself for it. Today, the office is one of the most important engineering consultancy offices in Jeddah. Equipped with the latest modern devices that serve the engineering field, Supervised by the architect Yousef himself to many of the engineers, technicians and administrators from various scientific and practical experiences. His work concussed boil down to engineering designs management and the development of modern ideas that are commensurate with the community, The love of the profession and ethics and loyalty for it have been the basis of the success of the office... As well as the commitment to work and dealing with people with credibility and transparency, and customer service at the fullest, and aesthetic touch stems from the personality of office owner and the environment which in he lived and bred. ..The office vision is to create engineering creations commensurate with our customs and traditions and submit good opinions is a proportion process to place science and expertise together. .. Expertise presents on the ground and reflected on the buildings that are designed, where there is the most important elements of building, which are economic and aesthetic component, and meet the need for which it was built the building.



Abstract of the arch. Youssef Mohammad Saeedi office for engineering consultancy



Trade name:	Engineer Youssef Mohammad Saeedi office for engineering consultancy
The legal entity of the facility:	Individual facility – its owner is engineer Yousef Mohammad Saeedi.
Commercial Registration No.	(4030231228) issued by the Ministry of Trade.
Date of office opening:	Established as an consultant office in 4/12/1411 AH
Address:	The headquarters of the office Jeddah Al-Zahra neighborhood - Ahmad Ali Alatas st.
Postal Address:	PO.B (126981) Jeddah (21352)
Tel.	012 6911336 / 012 6914474 Fax: 012 6542557
Website:	www.yssc-office.com E-mail: info@yssc-office.com



Our customers





ERSPECTIVE

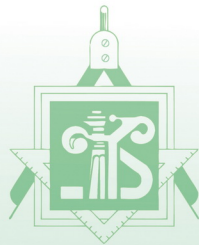
پراجیکٹ کی تفصیلی عکاسی
پراجیکٹ کی تفصیلی عکاسی
پراجیکٹ کی تفصیلی عکاسی



APARTMENT

MAIN PERSPECTIVE

پراجیکٹ کی تفصیلی عکاسی
پراجیکٹ کی تفصیلی عکاسی
پراجیکٹ کی تفصیلی عکاسی





Achievements:

During the previous period, the office achieved many of the vital and characteristic projects in Jeddah City and other cities of the Kingdom and of the various kinds (Commercial Residential - Administrative Offices - Hotels - furnished residential units - commercial centers - polyclinics (clinics) - villas - apartment complexes - housing schemes - gas stations and its supplement - in addition to the land survey)

The office considers one of the technical accredited offices to the concerned authorities in the Kingdom of Saudi Arabia such as Engineering Authority - the Secretariat of Jeddah and the secretariats of some cities in the Kingdom.

The nature of the activity:

We practice all the activities related to engineering consulting such designs, supervision, engineering consultancy, study, planning, coordinating the implementation of parks and sites, and we join government and private Competitions. and our office is housed all the engineering staff, in addition to all kinds of engineering activities, Based on the license, which we got from the Ministry of Commerce to practice our consultancy activities in the field of engineering. now we have got a long experience in this field, and we have done a lot of works that we are proud of and their owners been glad in the last period.

بنة
أمانة
جدة



وزارة التجارة والصناعة
Ministry of Commerce and Industry



الهيئة السعودية للمهندسين
SAUDI COUNCIL OF ENGINEERS





The main sections

Administrative department:

Manager Director: The development of the main goals of the office and follow up the work which has done and the manner in which leads him and personal supervision at all the designs, reports and follow-up to wrap-up all office projects achieved the customer's desire and satisfaction.

Deputy Director: Receive and discuss projects with clients and coordination between the departments of the office with clients and follow-up design projects satisfactorily for the customer in addition to the follow-up performance and the level of achievement in all acts of designs.

Administrative Affairs: Print letters and correspondence, processing technical reports and follow-up e-mail, set up administrative forms, organize meetings and coordinate appointments for the Manager Director to prepare and maintain all documents and archived electronically, as well as all acts relating to employees, also coordination for the needs of the office of the materials, supplies, and communications maintenance and faults.

Accounts: The preparation and review of contracts and follow-up with customers and financial Implications of it, the preparation and review of contracts and follow-up with customers and Implications Financial them, and carry out its responsibilities for the accounts of public and what the related work such as reviewing restrictions locks and review the reports of closing monthly, and supervision of the bank accounts at the bank and deposit revenue, checks and preparation of periodic reports own expenses to inform the Director of Administrative to it.







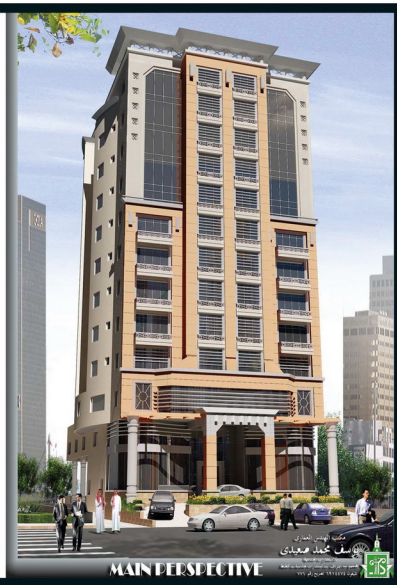
Survey section:

This section consists of a number (3) of experienced engineers and technicians of Survey raise , devices and surveyors technologies which are the base to Prepare Survey sketch, Therefore, it is not possible to verify the validity of the dimensions and areas of site sketch without it. The work is done in accordance with the terms and conditions of the new arrangements from Jeddah Municipality for Survey raise by devices approved by the global positioning system and dealing with the types of field survey measurements files, that required and obtain the field survey measurements files for different devices. Preparation and the inclusion of the preparation and the inclusion of field survey measurements files resulting from the Survey raise that is the basis for the preparation of the survey sketch and others are located field.

Architect section:

This section consists of a number (11) of experienced and competence engineers and technicians, the engineering team is working on the preparation, drawing architectural designs , preparation of studies and supervision of the architectural designs for projects, design and approve architectural plans submitted by the reality of nature. In addition, provision of architectural and development studies , development and technical support works , review the project design commensurate with the architectural character and preparation of tables of quantities and specifications to the terms of architectural works for projects, and others which is located within this field.





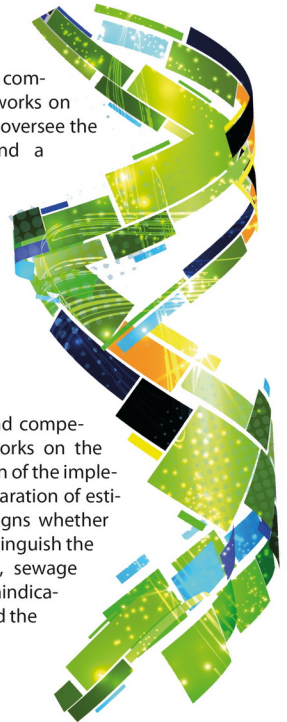


Structural section:

This section consists of a number (6) of experienced and competence engineers and technicians, engineering team works on the preparation of studies and work designs, review and oversee the implementation, receipt of construction projects and a preview of the existing facilities, the preparation of reports on their construction and supervision of the implementation of civil works for new projects. Review the reports of the soil and the foundation and preparation booklet technical specifications of the installations and others that is located within this field.

Electromechanical section:

This section consists of a number (2) of experienced and competence engineers and technicians, engineering team works on the preparation of studies and review the designs. Supervision of the implementation and the receipt of mechanical work. The preparation of estimate the thermal loads studies, prepare electrical designs whether lighting or power, electrical loads calculations, design extinguish the fire systems, early warning and feed water networks, sewage systems, audiovisual and air conditioning systems, contraindications lightning system and design weak current circuit and the others. Which is located within this field.





PERSPECTIVE!





A pilot project, residential and commercial tower

Owned by:-

Alraschat distinctive
for real estate development Company

Designer: Company (U + A)
the Canadian branch of Dubai

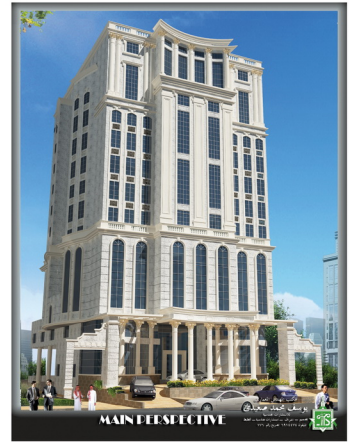
Consultative:

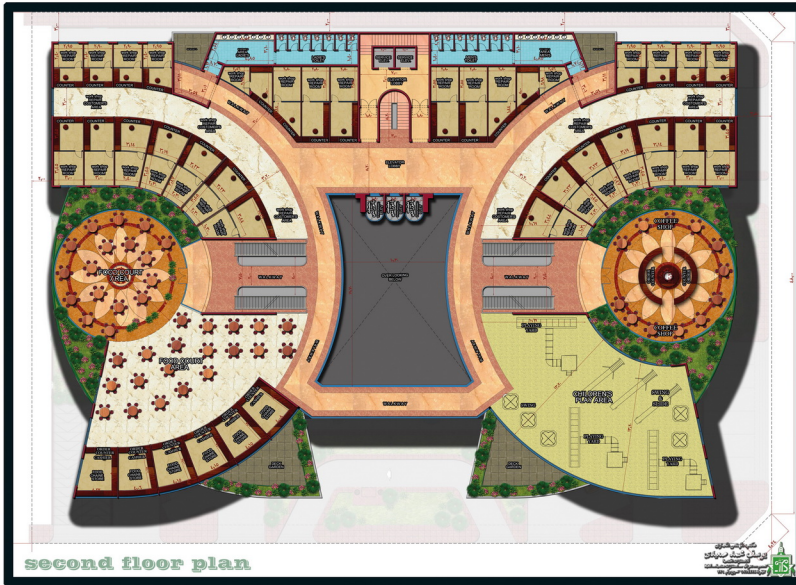
Arch. Youssef Mohammad Saeedi office
for engineering consultancy







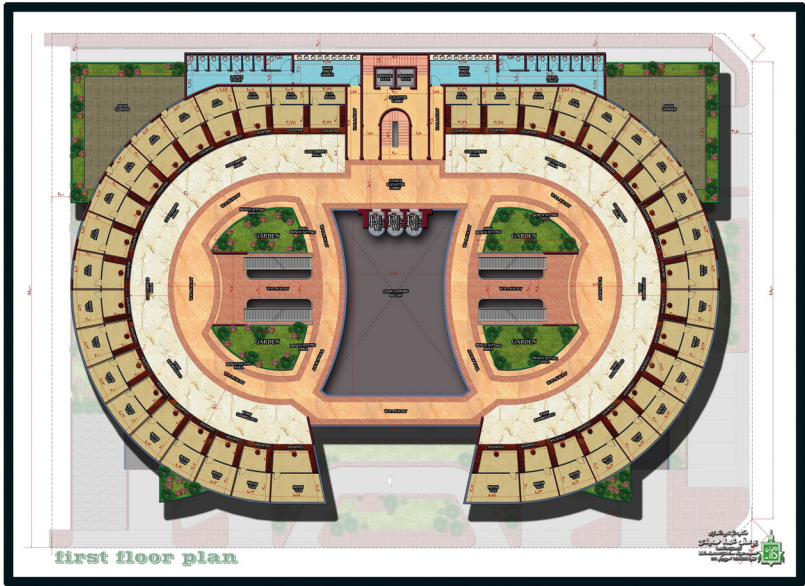
























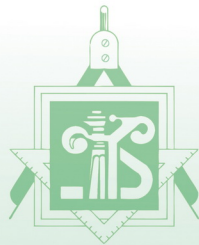
PERSPECTIVE

مكتب الهندسة المعمارية
يوسف محمد مرادى
 المسجل رقم 1000
 رقم الهاتف: 011 2333 1111
 رقم الفاكس: 011 2333 1111



PERSPECTIVE

مكتب الهندسة المعمارية
يوسف محمد مرادى
 المسجل رقم 1000
 رقم الهاتف: 011 2333 1111
 رقم الفاكس: 011 2333 1111





*** Future Vision of Jeddah city ***

Jeddah city is based on the secretariat. so we all have enough sense and the desire to actual development, we heading "by Allah`s will" in the right direction, And I see a clear imprint and new features to a new city will appear in an honorable. where began actual preparations for large projects and a lot may be known to many people and will see it on the ground "by Allah`s will".

Arch. Yousef M. Saeedi



